

SERBIAN AIR FORCE AND AIR DEFENCE



Pilot's Guide

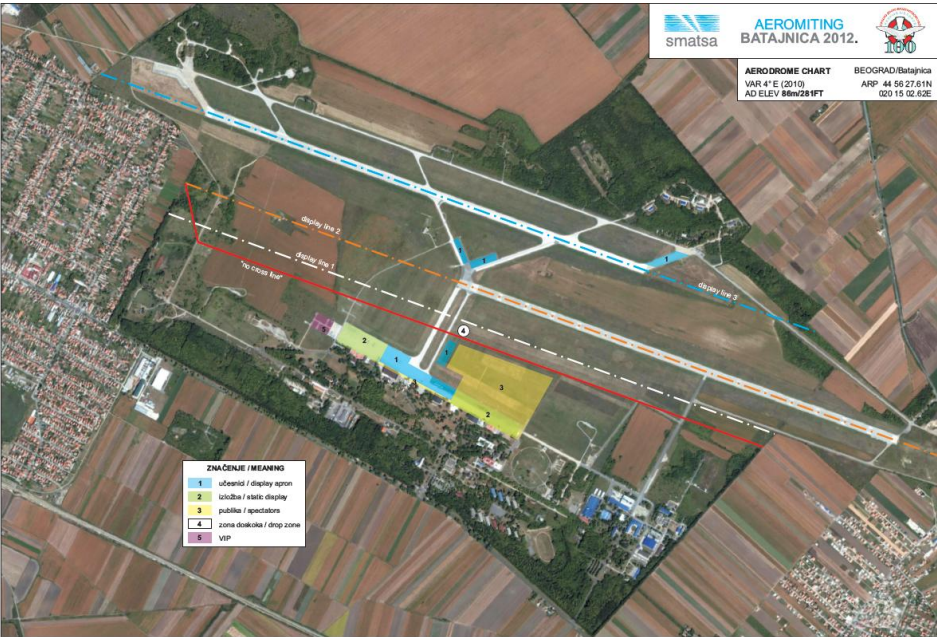
AIRPORT MAIN DATA

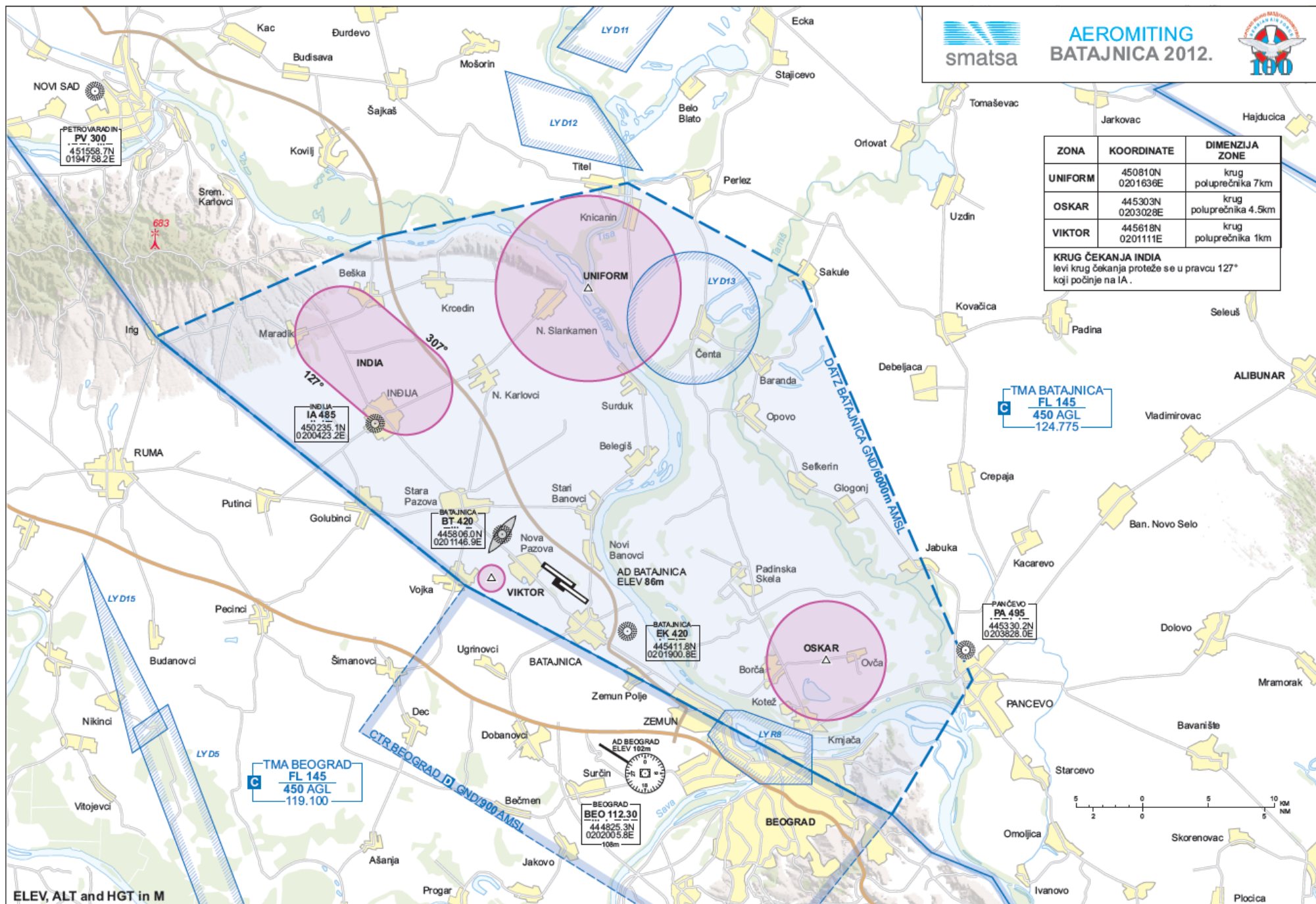
LYBT

The Military Airport is situated 3 km (0,54 Nm) NW from the church in Batajnica and SE from Nova Pazova.

Aerodrome Reference Point: **44°56'27,61"N**
020°15'02,62"E

Elevation: **281 ft (86m).**
Magnetic Variation: **4°E (2010).**
Annual change: **+4,9' (0,05°).**
Types of traffic permitted: **IFR/VFR**





SERVICES

A.R.O. and A.M.O. are located in the tower building (Mobile).

ATIS is not available! The METAR is half-hourly.

Ambulance and Fire Fighting Services are available.

BRIEFINGS

Briefings will be held in the briefing room.

A mandatory briefing will be given for the formation leaders (or their designated pilots, back up leaders) and for the a/c commanders (solo flight).

AIRSHOW BRIEFINGS:

- (a) "BATAJNICA 2012" General Briefing:
01 September 09:30 UTC
- (b) "BATAJNICA 2012" Main Briefing:
02 September 07:30 UTC
- (c) DEPARTURE METEO BRIEFING:
03 September 07:30 UTC and upon request

NO BRIEF=NO FLY

AIRSHOW RULES AND RESTRICTIONS

FIXED WING-VERTICAL SEPARATION (INCLUDES SEPARATION FROM OBSTRUCTIONS)

(a) Straight and level flypasts including turns with an angle of bank up to 20 degrees are to be performed above 150 feet AGL.

(b) All aerobatic manoeuvres, including inverted fly passes and MANEUVERS, WHICH INVOLVE PULLING TROUGH THE VERTICAL, are to be executed above 450 feet AGL.

Descent below 450 feet AGL is permitted when accomplishment of the manoeuvre is assured.

For the purposes of this Regulation, slow speed, high angle of attack flypasts are to be regarded as "aerobatic" manoeuvres.

(c) All other manoeuvres are to be completed above 300 feet AGL.

ROTARY WING AND GENERAL AVIATION VERTICAL SEPARATION (INCLUDES SEPARATION FROM OBSTRUCTIONS)

(a) Straight and level flypasts including turns with an angle of bank up to 20 degrees are to be performed above 100 feet AGL.

(b) Aerobatics will only be permitted to helicopters and general aviation which have a certified capability proven to the satisfaction of the "BATAJNICA 2012" Flying Control Committee.

(c) Aerobatic and rolling manoeuvres must be executed and completed above 300 feet AGL. Descent below 300 feet AGL is permitted when accomplishment of the manoeuvre is assured.

Hovering and transition manoeuvres may be performed below 100 feet AGL.

Not more than one roll may be performed during any one pass.

All maneuvers are to be completed above 100 feet AGL except hovering and transition manoeuvres, which may be performed below 100 feet AGL.

FIXED WING-LATERAL SEPARATION

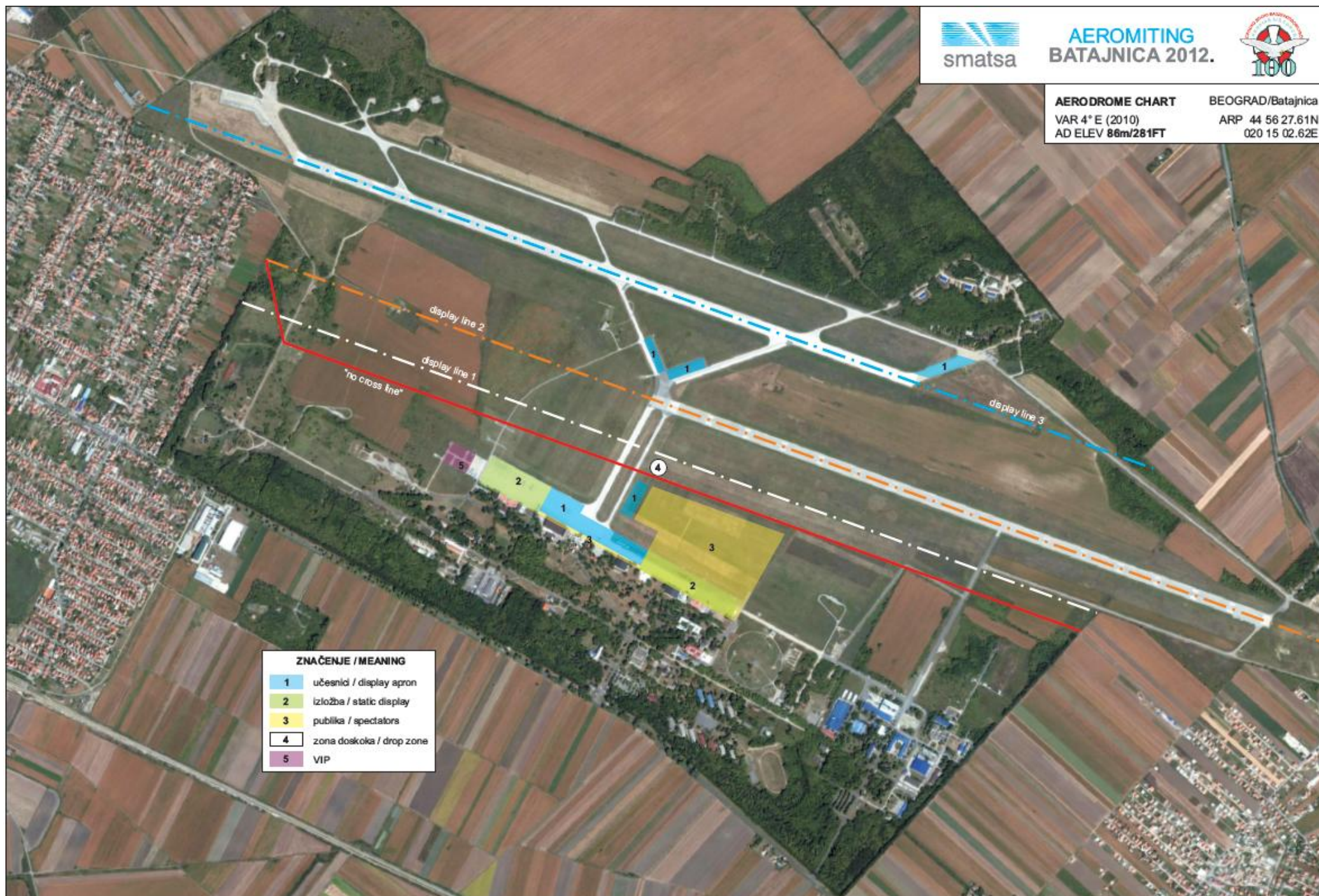
- (a) All aircraft are to be flown no closer to the Spectator Enclosures than 230m from Spectator Line (when the velocity vector is not towards the spectator enclosure) („no cross line“).
- (b) General aviation and helicopters should not be turned towards spectators enclosures unless the turn is completed any closer than Display line 1
- (c) When flying at speeds less than 300 Knots IAS aircraft are not to be turned towards the spectator enclosures unless the turn is completed any closer than Display line 2.
- (d) When flying at speeds equal or greater than 300 Knots IAS aircraft are not to be turned towards the spectator enclosures unless the turn is completed any closer than Display Line 3.

ROTARY WING-LATERAL SEPARATION

All manoeuvres are to be performed no closer to the Spectator Enclosures than Display Line 1.

AERODROME CHART
VAR 4° E (2010)
AD ELEV 86m/281FT

BEOGRAD/Batajnica
ARP 44 56 27.61N
020 15 02.62E



ZNAČENJE / MEANING	
1	učesnici / display apron
2	izložba / static display
3	publika / spectators
4	zona doskoka / drop zone
5	VIP

GENERAL RULES

- (a) Engines are not to be shut down during flying demonstrations.
- (b) No interlacing maneuvers are to be performed towards the Spectator Enclosures.
- (c) Aircraft are not to be flown outside the aircraft's prevented limitations.
- (d) Aircraft must not exceed True Mach Number (TMN) of M 0.95 or 600 knots IAS, whichever is the lower.
- (e) Aircraft are strictly prohibited to fly over the Spectator Enclosures unless requested, in writing at least two (2) weeks before "BATAJNICA 2012" from the Display Director. This will only be granted for "non-aerobatics" maneuvers and only for single aircraft (not formation). Agreement to such an application may be subject to a validation flight before the "BATAJNICA 2012" Flying Control Committee.
- (f) No one maneuver is to be attempted which is likely to jeopardize the safety of spectators in the event of mishap or misjudgement.
- (g) A multi-engine aircraft must not fly below the speed at which it is possible to climb away, without change of configuration, should any engine fail to respond to an acceleration demand.
- (h) Aircraft are not to fly outside the Display Zone (DZ) during their display sequence.
- (i) Whilst carrying suspended loads helicopters must not be flown within such proximity to personnel, aircraft or buildings that hazard would be caused if the load were to become detached or control difficulties experienced during the flight. All such flying is to be carried out no closer to the

Spectator Enclosures than the western edge of Runway 12 R-30L.

- (j) Only maneuvers or sequences, which have been accepted by the "BATAJNICA 2012" Flying Control Committee, are to be performed. The "BATAJNICA 2012" Flying Control Committee is empowered to impose increased limitations on individual aircraft or aircraft display teams at its discretion.
- (k) Pilots are to be thoroughly aware of the residential and sensitive areas surrounding Batajnica AFB, and especially Batajnica village, Banovci and Nova Pazova. In order to avoid disturbance in these areas, the following must be observed in the planning and execution of flight displays:
 - Low label aerobatic maneuvers must not be performed over these areas.
 - During demonstrations, aircraft must commence a climb from the minimum display height before crossing the “airfield boundary”.
 - Aircraft approaching the airfield during their display must remain at a suitable height whilst over these areas and not descend to the minimum display height for display maneuvers or fly-pasts until within the “airfield boundary”.
- (l) Smoke generating devices are to be switched off prior of the final approach to land, low approach or touch and go.
- (m) The use of pyrotechnics by aircraft during displays is prohibited, except on request, which is approved by Display Director.
- (n) Use of chaff and flares during "BATAJNICA 2012" is prohibited, except on request, which is approved by Display Director.

FLYING CONTROL COMMITTEE

The Flying Control Committee (FCC) members, who will be identified at the Display Briefings, will monitor all rehearsals and flying displays.

Aircrew will receive a warning if the display limits are exceeded marginally.

Should the FCC require a display to be terminated, for whatever reason, Air Traffic Control will broadcast «**Call-sign, STOP, STOP, STOP¹**».

On hearing this call, the pilot should stop his display immediately and turn downwind for landing.

AIR TRAFFIC CONTROL

VFR control procedures will apply.

English language will be used for all air-ground/ground-air communications.

ALTIMETER SETTING:

During the Airshow and the rehearsals QFE is used. QNH will be given for the arriving and departing traffic.

APPROACH PROCEDURES:

CKL BEOGRAD should lead aircraft toward entry points. After establishing two-way radio communication with ATC Batajnica, aircraft will be cleared to follow the appropriate procedure.

In the event of inclement weather, GCA will monitor all IFR approach 12L in order to assist.

¹ Such curtailment should not be taken to imply automatically that the pilot has in any way infringed the flying regulations.

Additional information can be found in [AIP SERBIA](#).

In the event of an emergency, aircraft should use frequency for emergency 121,5 MHz.

FREQUENCIES (AM): (discreet freqs will be briefed)

FREQUENCY DESIGNATION	CALL SIGN	FREQUENCY	HOURS OF OPERATION	REMARKS
APP TWR	BATAJNICA APPROACH	124,775 MHz	H24	-
GCA	BATAJNICA GCA	135,500 MHz	H24	-
GROUND	BATAJNICA GROUND	122.500 MHz	During DZ active	-
DISPLAY	BATAJNICA DISPLAY	134.00 MHz	During DZ active	-
RESERVE	BATAJNICA GROUND / DISPLAY	135,500 MHz	During DZ active	-

EMERGENCIES

IN-FLIGHT EMERGENCY:

In case of an in-flight emergency, if circumstances permit, proceed to the alternate airfield.

CABLES AND BARRIERS:

There is no arresting net and the cable system at the airport.

HOT BRAKE PROCEDURE:

RWY Nr.1: Stop on the apron, inform TWR.

RWY 2:

Runway 30: Turn right, vacate runway, stop on the apron, inform TWR.

Runway 12: Turn left, vacate runway, stop on the apron, inform TWR.

DRAG-CHUTE:

Let the TWR or OPS know beforehand if you use it as a standard procedure after landing.

Otherwise if unable to vacate the RWY with the drag-chute, drop it as close as possible to the runway edge. Mind the runway lighting.

HYDRAZINE:

When hydrazine decontamination/clean up is required, inform TWR:

- (a) RWY 2: at the end of runway turn right (30)/left (12)
- (b) RWY 1: at the end of runway stop

Park the aircraft with the nose into the wind and await the fire brigade instructions and assistance.

COMMUNICATION FAILURE:

- (a) Stop the show
- (b) Proceed DOWNWIND and land
- (c) Wait for the FOLLOW ME vehicle

AIRPORT OBSTACLES

NOT AVAILABLE

FUEL DUMPING: at FL 100 or above.

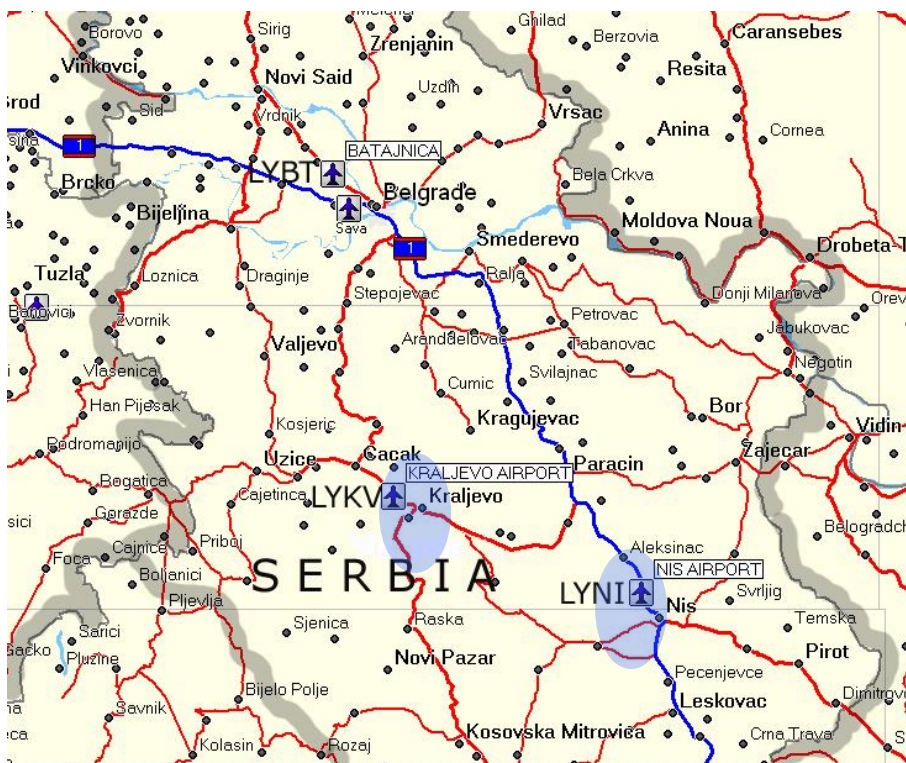
JETTISON AREA:

Jettison of external stores on provided area at the airport, from 150-200 meters (492-656 ft) of height, according to concerned aircraft and according to ATC instructions.

- (d) The area for the controlled ejection is Čenta training area LYD-13 or upon the decision of the Display Director.
- (e) The area for the controlled jettison is Čenta training area LYD-13 or upon the decision of the Display Director.

Jettison height: 150-200 meters (492-656 ft)

ALTERNATE AIRFIELDS



From Batajnica airfield (LYBT):

- **LYKV 160° 140 km (75,6 Nm) KRALJEVO APP 120.800**

ATC will provide vectors, altitude and clearances.

LYNI and LYKV are a single runway airbases.

You have to hold fuel for the alternate one.

DUTY CALL LIST

Batajnica international area code: +381 11 3106
Batajnica national area code: 011 3106
Tel: +381 11 3106 100
Fax: +381 11 3106 205
Teleks: not available
Afs: not available

DUTY

PHONE NUMBER

TWR	3106-211
A.R.O.(FIO)	3106-210
METEO	3106-212
BASE AMBULANCE	3106-090
BASE FIRE BRIGADE	3106-203
V.I.P. SALON	3106-115
POLICE STATION(civilian)	022/332-410 011/8480-322
SAR UNIT	3106-311 011/3160 629

APPENDIX:

AD 2 LYBT

AIRAC AIP SUP 3/11

TABLE OF CONTENTS

AIRPORT MAIN DATA.....	2
SERVICES.....	4
BRIEFINGS.....	4
AIRSHOW RULES AND RESTRICTIONS	5
FIXED WING-VERTICAL SEPARATION (INCLUDES SEPARATION FROM OBSTRUCTIONS).....	5
GENERAL RULES	8
FLYING CONTROL COMMITTEE	10
AIR TRAFFIC CONTROL	10
ALTIMETER SETTING:	10
APPROACH PROCEDURES:	10
EMERGENCIES	12
IN-FLIGHT EMERGENCY:.....	12
CABLES AND BARRIERS:.....	12
HOT BRAKE PROCEDURE:.....	12
DRAG-CHUTE:	12
HYDRAZINE:	12
COMMUNICATION FAILURE:.....	13
AIRPORT OBSTACLES	13
ALTERNATE AIRFIELDS	14
DUTY CALL LIST	15
APPENDIX:.....	15

Publisher

Serbian AF&AD Command

Author

LtCol Bozidar Cmiljanovic, pilot, AF&AD Command

Graphic Preparation

Printed by

Printed in
2012